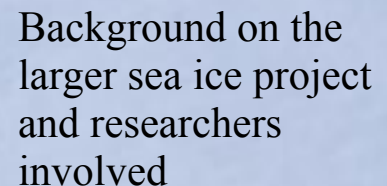
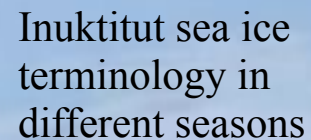
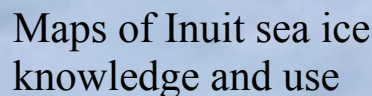
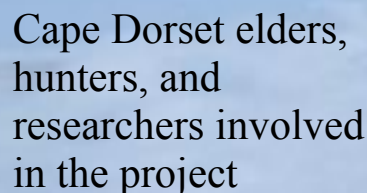
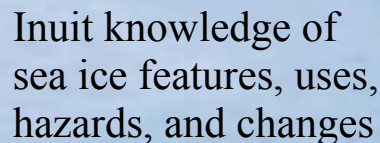


to Peter Pitseolak High School on Thursday, March 17 @ 7pm
to celebrate the community and public launch of the

The ***siku* Atlas** was developed as an educational resource to share the knowledge, stories, maps, language, and lessons from years of interviews, focus groups, sea ice trips, and workshops with Inuit sea ice experts in **Cape Dorset, Igloolik, Pangnirtung, and Clyde River, Nunavut.**

It can be used to learn about:



Developed as part of the International Polar Year project called
The Inuit Sea Ice Use and Occupancy Project (ISIUOP), based at Carleton University, through the